

# Reference list stationary dryer AgroDry®

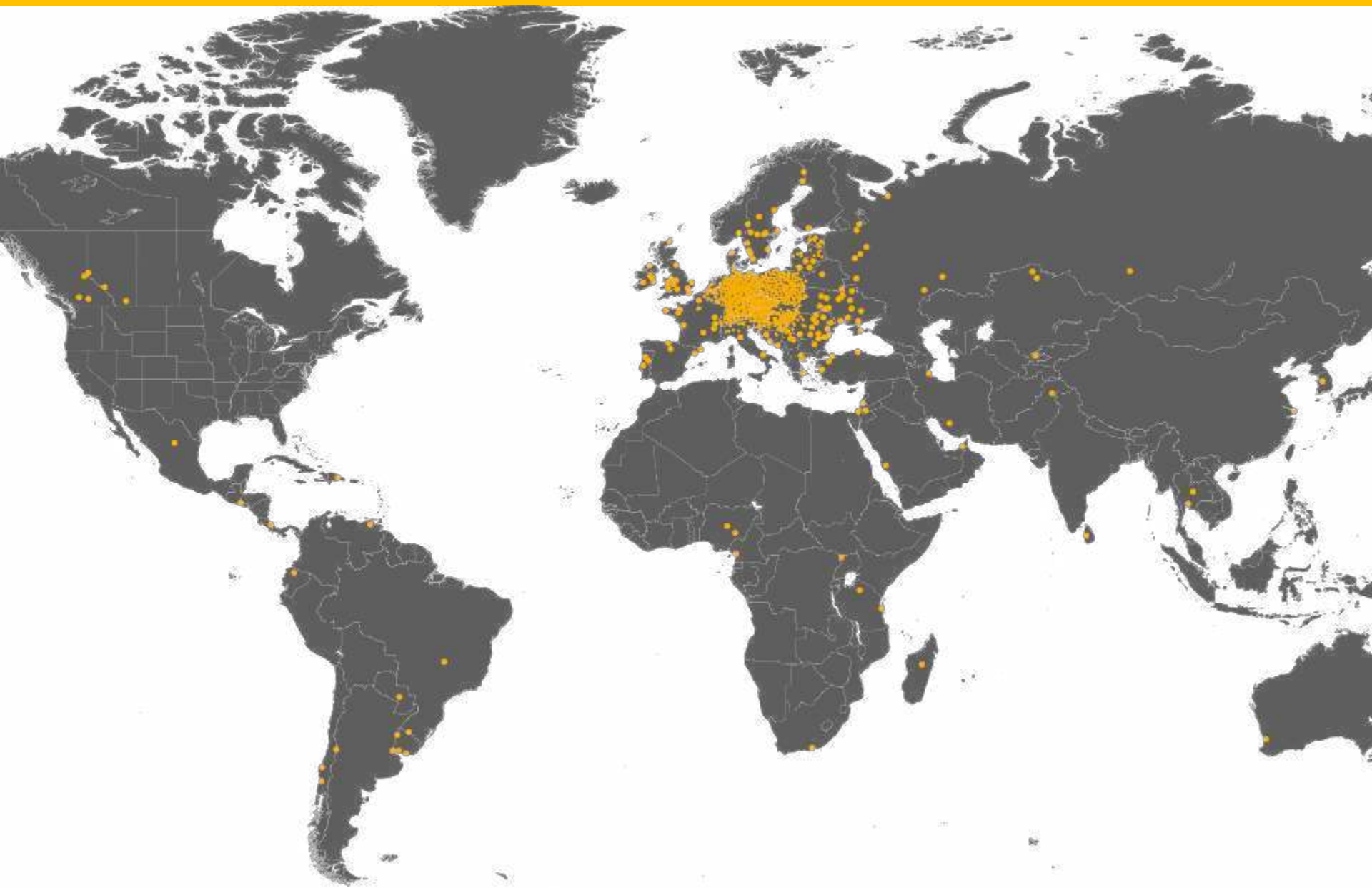


drying technology

STELA Laxhuber GmbH | Laxhuberplatz 1 | D-84323 Massing  
Tel. +49(0)8724 899-0 | E-Mail: [sales@stela.de](mailto:sales@stela.de) | [www.stela.de](http://www.stela.de)



drying technology



Projekt: RWG Badbergen  
Deutschland, Dinklage



**Type:** MDB-XN 1/15-SB

**Year:** 2019

**Product:** maize, wheat, rapeseed

**Dryer capacity::**

maize: 15 t/h from 35 % to 15%

wheat: 45 t/h from 19% to 15%

rapeseed: 32 t/h from 13% to 9%

Projekt: Kámen  
Tschechische Republik, Kámen



**Type:** GDB-TN 1/9-S

**Year:** 2019

**Product:** maize, wheat, rapeseed

**Dryer capacity::**

maize: 7.7 t/h from 35 % to 15%

wheat: 31 t/h from 19% to 15%

rapeseed: 23.2 t/h from 13% to 9%



Projekt: Troubky  
Tschechische Republik, Troubky



**Type:** GDB-TN 1/9-S

**Year:** 2019

**Product:** maize, wheat, rapeseed

**Dryer capacity::**

maize: 7.7 t/h from 35 % to 15%

wheat: 31 t/h from 19% to 15%

rapeseed: 23.2 t/h from 13% to 9%

Projekt: Berger Bern  
Schweiz, Oberbottingen



**Type:** MDB-TN 1/4-S

**Year:** 2019

**Product:** maize, wheat, rapeseed

**Dryer capacity::**

maize: 3 t/h from 35 % to 15%

wheat: 11.2 t/h from 19% to 15%

rapeseed: 8.2 t/h from 13% to 9%

Projekt: Agromat LWZ Teutleben  
Deutschland, Hörsel- Teutleben



**Type:** GDB-TN 1/8-SU  
**Year:** 2019  
**Product:** rapeseed, wheat

**Dryer capacity::**  
rapeseed: 13 t/h from 13% to 9%  
wheat: 16.8- 20 t/h from 19% to 15%

Projekt: Raiffeisen Rothalmünster  
Deutschland, Rothalmünster



**Type:** MDB-XN 1/12-SB  
**Year:** 2019  
**Product:** maize, wheat, rapeseed

**Dryer capacity::**  
maize: 12 t/h from 35 % to 15%  
wheat: 36 t/h from 19% to 15%  
rapeseed: 25 t/h from 13% to 9%



# drying technology

Projekt: Graf Droste zu Vischering  
Deutschland, Rosendahl



**Type:** GDB-XN 1/6-SU

**Year:** 2019

**Product:** maize, wheat, rapeseed

**Dryer capacity::**

maize: ca. 6.6 t/h from 35% to 15%

wheat: ca. 18- 20 t/h from 19% to 15%

rapeseed: 14 t/h from 13% to 9%

Projekt: Bílovec  
Tschechische Republik, Bílovec



**Type:** GDB-TN 1/9-S

**Year:** 2019

**Product:** maize, wheat, rapeseed

**Dryer capacity::**

maize: 7.7 t/h from 35 % to 15%

wheat: 31 t/h from 19% to 15%

rapeseed: 23.2 t/h from 13% to 9%





# drying technology

Projekt: Moll Anlagenbau GmbH  
Deutschland, Flecken- Apenburg



**Type:** GUB-TN 1/3-3-S

**Year:** 2019

**Product:** maize, wheat

**Dryer capacity::**

maize: 1.58- 2.04 t/h from 35 % to 15%

wheat: 3.25- 4.04 t/h from 19% to 15%

Projekt: Awila Anlagenbau  
Indonesien, Lastrup



**Type:** MDB-XN 1/13-SU

**Year:** 2018

**Product:** maize, wheat, rapeseed

**Dryer capacity::**

maize: 20 t/h from 24% to 14%

wheat: 50 t/h from 19% to 15%

rapeseed: 40 t/h from 13 % to 9%

Projekt: Bruno Fehse & Sohn  
Deutschland, Estorf



**Type:** GDB-TN 1/8-SU  
**Year:** 2018  
**Product:** maize, wheat

**Dryer capacity::**

maize: ca. 5.6 t/h from 35% to 15%  
wheat: ca. 20 t/h from 19% to 15%

Projekt: Nosovka Niva  
Ukraine, Kolomiytsevka village



**Type:** MDB-XN 2/14-SU  
**Year:** 2018  
**Product:** maize

**Dryer capacity::**

maize: 32.0 t/h from 28% to 14%





# drying technology

Project: Raiffeisen-Waren  
Germany, Wielen

**Type:** MDB-TN 1/11-SB

**Year:** 2018

**Product:** maize, wheat, rapeseed

**Dryer capacity:** maize: approx. 7.7 t/h from 35% to 15%

wheat: approx. 23.0 t/h from 19% to 15%

rapeseed: 16.5 t/h from 13% to 9%





# drying technology

Project: RWG Ammerland-OstFriesland  
Germany, Weener-Möhlenwarf



**Type:** GDB-TN 1/8-SU  
**Year:** 2018  
**Product:** maize, wheat

**Dryer capacity:**

wheat: approx. 16 - 18 t/h from 19% to 15%  
maize: approx. 5.6 t/h from 35% to 15%

Project: Farm Enterprise "MP Horizon"  
Ukraine, Chernihiv Region



**Type:** MDB-XN 1/8-S  
**Year:** 2018  
**Product:** maize

**Dryer capacity:**

maize: approx. 11.3 t/h from 30% to 15%



# drying technology

Project: Sedlmeir Peter e.K.,  
Germany, Hörmannsberg



**Type:** MDB-XN 1/8-SU  
**Year:** 2018  
**Product:** maize, wheat, rapeseedeed

**Dryer capacity:**  
maize: approx. 8 t/h from 35% to 15%  
wheat: approx. 22 t/h from 19% to 15%  
rapeseedeed: approx. 18 t/h from 13% to 9%

Project: Dobeles Dzirnavnieks AS  
Latvia, Dobeles Novads



**Type:** MDB-XN 3/20-SB  
**Year:** 2018  
**Product:** wheat

**Dryer capacity:**  
wheat: approx. 200 – 210 t/h from 19% to 15%





# drying technology

Project: Burkart Hubert,  
Germany, Ottersweier



**Type:** MDB-TN 1/5-S

**Year:** 2018

**Product:** maize

**Dryer capacity:**

maize: approx. 7 t/h from 35% to 15%

Project: Wünschek-Dreher'sche Gutsverwaltung  
Austria, Himberg



**Type:** GDB-TN 1/4-S

**Year:** 2018

**Product:** maize, rapeseed

**Dryer capacity:**

maize: approx. 4 – 5 t/h from 25% to 15%

rapeseed: approx. 7 t/h from 13% to 9%



# drying technology

Project: ZOD Brnisté  
Czech Republic, Brnisté

**Type:** GDB-TN 1/9-S

**Year:** 2018

**Product:** maize, sunflower seeds

**Dryer capacity:** maize: approx. 7.7 t/h from 35% to 15%  
wheat: approx. 31.0 t/h from 19% to 15%







# drying technology

Project: SEMAT, a.s.  
Slovakia, Trnava



**Type:** MDB-XN 2/12-S  
**Year:** 2017  
**Product:** maize, wheat, rapeseed

**Drying capacity:**

Maize: approx. 28.8 t/h from 35% to 15%  
Wheat: approx. 92.4 t/h from 19% to 15%  
Rapeseed: approx. 73.6 t/h from 13% to 9%

Project: Limited Liability Company  
"Agrofirma Kasatkaya"  
Ukraine, Sumy Region



**Type:** MDB-XN 2/14-S  
**Year:** 2018  
**Product:** maize

**Dryer capacity:**

maize: approx. 33.7 t/h from 30% to 14%





# drying technology

Project: Alexander Lang  
Austria, Biberach



**Type:** MDB-TN 1/7-SU  
**Year:** 2017  
**Product:** maize

**Drying capacity:**  
approx. 5,2 t/h from 35% to 15%

Project: Shostkinskiy Elevator Ltd.  
Ukraine, Sumy Region



**Type:** MDB-XN 2/18-SU  
**Year:** 2017  
**Produkt:** maize, wheat, rapeseed

**Drying capacity:**  
Maize: approx. 29.5 t/h from 35% to 14%  
Wheat: approx. 132.0 t/h from 19% to 15%  
Rapeseed: approx. 95.5 t/h from 13% to 9%

Project: BZK Group  
Poland, Prudnik



**Type:** MDB-XN 3/18-SB

**Year:** 2017

**Product:** maize

**Drying capacity:**

approx. 45,0 t/h from 35% to 15%

Project: Zemědělské obchodní družstvo  
Úmonín  
Czech Republic, Křesetice



**Type:** MDB-TN 1/8-S

**Year:** 2017

**Product:** maize, wheat, rapeseed

**Drying capacity:**

Maize: approx. 6.9 t/h from 35% to 15%

Wheat: approx. 22.0 t/h from 19% to 15%

Rapeseed: approx. 17.6 t/h from 13% to 9%





# drying technology

Project: LLC „Krolevetsky feed mill“  
Ukraine, Sumy region

**Type:** 2x MDB-XN 4/16-SU

**Year:** 2017

**Product:** maize, sunflower seeds

**Drying capacity:** maize: approx. 115,0 t/h from 20% to 15%  
sunflower seeds: approx. 77,0 t/h from 10% to 8%







# drying technology

Project: Agrargen. Schwinkendorf eG,  
Germany, Schwinkendorf



**Type:** GDB-XN 1/15-SU  
**Year:** 2017  
**Product:** maize, wheat, rapeseed

**Drying capacity:**

maize: approx. 15.0 t/h from 35% to 15%  
wheat: approx. 50.0 from 19% to 15%  
rapeseed: approx. 40.0 t/h from 13% to 9%

Project: TOO <<GROSS NAN>>,  
Kasachstan, Akmolinskaja oblast



**Type:** GDB-XN 1/14-S  
**Year:** 2017  
**Product:** wheat, rapeseed

**Drying capacity:**

wheat: approx. 50,0 t/h from 19% to 14%  
rapeseed: approx. 39,0 t/h from 19% to 9%



# drying technology

Project: BGA-Oberindling  
Germany, Pocking



**Type:** MDB-TN 1/7-SU  
**Year:** 2017  
**Product:** maize, wheat, rapeseed

**Drying capacity:**  
maize: approx. 4,9 t/h from 35% to 15%  
wheat: approx. 14,7-17,5 t/h from 19% to 15%  
rapeseed: approx. 14 t/h from 13% to 9%

Project: Agrolok Sp.z.o.o.  
Poland, Osiek



**Type:** MDB-XN 3/19-SB  
**Year:** 2017  
**Product:** maize

**Drying capacity:**  
approx. 41,5 t/h from 35% to 15%



# drying technology

Project: Agricultural farm „Diedov“  
Ukraine, Kirovograd region



**Type:** MDB-XN 2/12-S  
**Year:** 2017  
**Product:** maize, wheat

**Drying capacity:**

maize: approx. 34.0 t/h from 25% to 15%  
wheat: approx. 66.5 t/h from 19% to 15%

Project: Trockenwerk Dobra  
Germany, Dürrohrsdorf-Dittersbach



**Type:** MDB-TN 1/7-SU  
**Year:** 2017  
**Product:** maize, wheat, rapeseed

**Drying capacity:**

maize: approx. 4.9 – 5.6 t/h from 35% to 15%  
wheat: approx. 14.7 – 17.5 t/h from 19% to 15%  
rapeseed: approx. 13.0 t/h from 13% to 9%





# drying technology

Project: AgroZZN, a.s.  
Czech Republic, Buhosovice nad Ohri



**Type:** GDB-XN 1/11-S

**Year:** 2016

**Product:** wheat

**Drying capacity:**

Wheat: approx. 50.0 t/h from 19% to 15%

Project: Agrar GmbH Großenehrich  
Germany, Großenehrich



**Type:** GDB-TN 1/4-S

**Year:** 2017

**Product:** maize, wheat, rapeseed

**Drying capacity:**

maize: approx. 2.8 t/h from 35% to 15%

wheat: approx. 8.4 – 10.0 t/h from 19% to 15%

rapeseed: approx. 8.0 t/h from 13% to 9%



# drying technology

Project: Schaffelhof-Ochsner GmbH  
Austria, Pama



**Type:** MDB-TN 1/6-S

**Year:** 2016

**Product:** maize

**Drying capacity:**

maize: approx. 4,0 t/h from 35% to 15%

Project: Farma Stare Sedlo s.r.o.  
Czech Republic, Bor



**Type:** GDB-TN 1/3-S

**Year:** 2016

**Product:** wheat, rapeseed

**Drying capacity:**

Wheat: approx. 10.3 t/h from 19% to 15%

Rapeseed: approx. 7.7 t/h from 13% to 9%



# drying technology

Project: Gut Emkendorf  
Germany, Emkendorf

Project: Osterland Landwirtschafts GmbH,  
Germany, Teuchern



**Type:** GDB-XN 1/4-S

**Year:** 2016

**Product:** maize, wheat, rapessed

**Drying capacity:**

maize: approx. 3.5 t/h from 35% to 15%

wheat: approx. 10.5 – 12.5 t/h from 19% to 15%

rapeseed: approx. 8.0 t/h from 13% to 9%



**Type:** GDB-TN 1/7-SU

**Year:** 2016

**Product:** maize, wheat, barley, rapeseed

**Drying capacity:**

Maize: approx. 4,8 t/h from 35% to 14,5%

Wheat: approx. 16,0 t/h from 19 % to 14,5%

Barley: approx. 16 t/h from 19% to 14,5%

rapeseed: approx. 14 t/h from 13% to 9%



Project: Agro Vysocina Bystre a.s.  
Czech Republic, Bystre u Policky



**Type:** GDB-TN 1/5-S  
**Year:** 2016  
**Product:** maize, wheat, rapeseed

**Drying capacity:**

Maize: approx. 4.3 t/h from 35% to 15%  
Wheat: approx. 17.2 t/h from 19% to 15%  
Rapeseed: approx. 12.9 t/h from 13% to 9%

Project: Rakovec a.s.  
Czech Republic, Rousinov



**Type:** GDB-TN 1/5-S  
**Year:** 2016  
**Product:** maize, wheat, rapeseed

**Drying capacity:**

Maize: approx. 4.3 t/h from 35% to 15%  
Wheat: approx. 17.2 t/h from 19% to 15%  
Rapeseed: approx. 12.9 t/h from 13% to 9%



# drying technology

Project: Raiffeisen Kraftfutterwerk  
Germany, Kehl

Project: Josef Sedlmeier  
Germany, Beutelsbach



**Type:** MDB-TN 1/11-SB

**Year:** 2016

**Product:** maize, wheat, rapeseed

**Drying capacity:**

maize: approx. 8.5 t/h from 35% to 15%

wheat: approx. 26.0 t/h from 19% to 15%

rapeseed: approx. 20.0 t/h from 13% to 9%



**Type:** MUB-TN 1/3-S

**Year:** 2016

**Product:** maize, wheat

**Drying capacity:**

maize: approx. 35.0 – 42.0 t/24h from 35% to 15%

wheat: approx. 70.0- 85.0 t/24h from 19 % to 15%



# drying technology

Project: Pawlica s.r.o., Postupice  
Czech Republic, Postupice



**Type:** GDB-TN 1/6-S

**Year:** 2016

**Product:** maize, wheat, rapeseed

**Drying capacity:**

maize: approx. 5.1 t/h from 35% to 15%

wheat: approx. 20.6 t/h from 19% to 15%

rapeseed: approx. 15.5 t/h from 13% to 9%

Project: Kartoffel-Lager- u. Handelsgesellschaft  
Pfiffelbach mbH  
Germany, Pfiffelbach



**Type:** GDB-TN 1/7-SU

**Year:** 2016

**Product:** wheat, rapeseed

**Drying capacity:**

wheat: approx. 8.0 t/h from 19 % to 15%

rapeseed: approx. 8.0 – 10.0 t/h from 13% to 9%





# drying technology

Project: Beck Alfons  
Germany, Oberergoldsbach



**Type:** MDB-XN 1/12-SB

**Year:** 2016

**Product:** maize

**Drying capacity:**

maize: approx. 12.0 t/h from 35% to 15%

Project: Pawlica Osowiec  
Poland, Sicienko



**Type:** MDB-XN 2/17-SB

**Year:** 2016

**Product:** maize, wheat, rapeseed

**Drying capacity:**

maize: approx. 33.6 t/h from 35% to 15%

wheat: approx. 75.0 t/h from 19 % to 15%

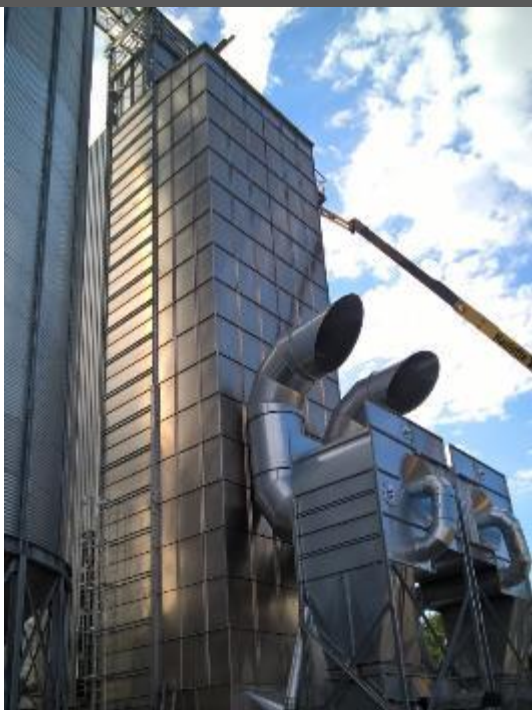
rapeseed: approx. 55.0 t/h from 13% to 9%



# drying technology

Project: Tovrnica Ulja Cebin  
Croatia, Cebin

Project: Raiffeisen Obergrafschaft eG  
Germany, Suddendorf



**Type:** MDB-XN 2/17-SU  
**Year:** 2016  
**Product:** sunflower seeds, maize

**Drying capacity:**

maize: approx. 30.0 t/h from 25% to 15%  
sunflower seeds: approx. 40.0 t/h from 14 % to 8%



**Type:** MDB-XN 1/11-SU  
**Year:** 2016  
**Product:** maize, wheat

**Drying capacity:**

maize: ca. 12,0 t/h from 35% to 15%  
wheat: ca. 35,0 t/h from 19% to 15%



# drying technology

Project: Ltd. „Ropa Ukraina“  
Ukraine, Stavischensky Distrikt



**Type:** MDB-XN 1/7-S  
**Year:** 2015  
**Product:** maize, wheat, rapeseed

**Drying capacity:**

maize: approx. 7.5 t/h from 35% to 15%  
wheat: approx. 22.5 t/h from 19% to 15%  
rape: approx. 20.5 t/h from 13% to 9%

Project: Agrargen. „Harzland“ e.G.  
Germany, Schwenda



**Type:** GDB-TN 1/7-S  
**Year:** 2015  
**Product:** maize, wheat, rapeseed

**Drying capacity:**

maize: approx. 14.7-17.5 t/h from 35% to 15%  
wheat: approx. 4.9 t/h from 19% to 15%  
rape: approx. 12.0 t/h from 13% to 9%





# drying technology

Project: Pokrovka-Agro  
Kasachstan, Akmolinskaja Oblast

Project: Gebr. Kreipe Logistik GmbH  
Germany, Schkopau



**Type:** GDB-XN 1/8-S  
**Year:** 2015  
**Product:** wheat, rapeseed

**Drying capacity:**

wheat: ca. 33,0 t/h from 20% to 15%  
wheat: ca. 27,3 t/h from 20% to 14%  
rapeseed: ca. 24,0 t/h from 13% to 9%



**Type:** GDB-TN 1/8-SU  
**Year:** 2015  
**Product:** maize, wheat, rapeseed

**Drying capacity:**

maize: approx. 5.6 t/h from 35% to 15%  
wheat: approx. 20.0 t/h from 19 % to 15%  
rapeseed: approx. 12.0 t/h from 13% to 9%



# drying technology

Project: Bioagra S.A.  
Poland, Nysa



**Type:** MDB-XN 3/18-SB

**Year:** 2015

**Product:** maize

**Drying capacity:**

approx. 45.0 t/h from 35% to 15%

Project: Klostergut Winnigen KG  
Germany, Aschersleben



**Type:** MDB-XN 1/10-S

**Year:** 2015

**Product:** maize, wheat, rapeseed

**Drying capacity:**

maize: approx. 10.0-12.0 t/h from 35% to 15%

wheat: approx. 30.0 t/h from 19% to 15%

rapessed: approx. 20.0 t/h from 13% to 9%



# drying technology

Project: Noble Resources Ukraine  
Ukraine, Konstantinovka village

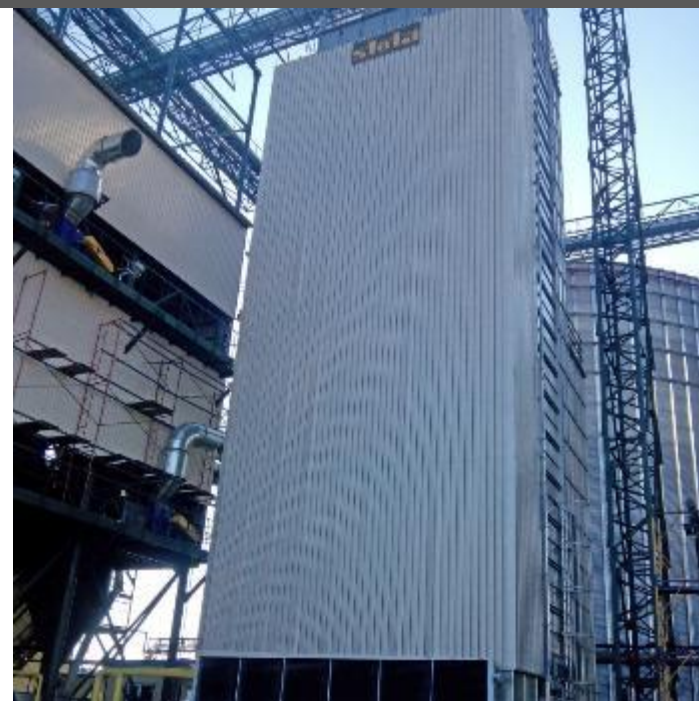


**Type:** MDB-XN 2/18-SU  
**Year:** 2015  
**Product:** maize, wheat

**Drying capacity :**

maize: approx. 50.8 t/h from 25% to 15%  
maize: approx. 42.0 t/h from 30% to 14%  
maize: approx. 30.0 t/h from 35% to 14%  
wheat: approx. 104.0 t/h from 19% to 15%

Project: Allseeds Black Sea LLC  
Ukraine, Odessa Region



**Type:** MDB-XN 3/17-S heated with gas line burner and steam – air heat exchanger  
**Year:** 2015  
**Product:** sunflower-seeds, rapeseed

**Drying capacity :**

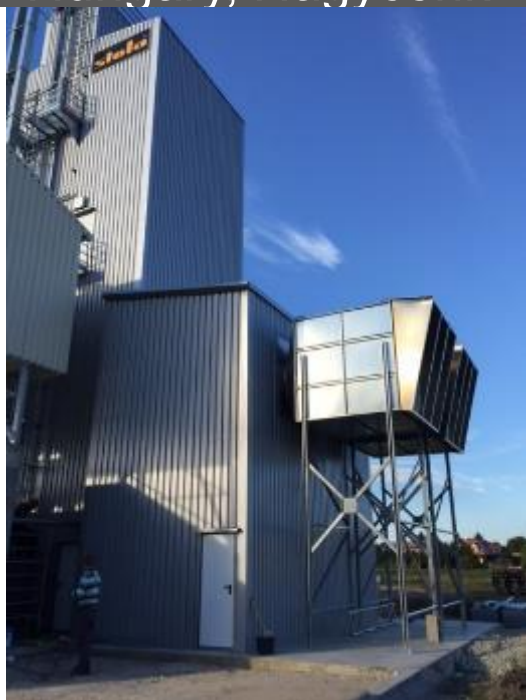
sunflower-seeds: approx. 60.0 t/h from 12% to 8%  
rapeseed: approx. 140.0 t/h from 13% to 9%





# drying technology

Project: Unser Lagerhaus  
Agrarkereskedelmi Kft.  
Hungary, Nagycenk



**Type:** MDB-XN 2/14-SB  
**Year:** 2015  
**Product:** maize

**Drying capacity:**  
approx. 38.0-40.0 t/h from 25% to 14%

Project: Wisniewko  
Poland, Wagrowiec



**Type:** MDB-XN 1/16-SB  
**Year:** 2015  
**Product:** maize

**Drying capacity:**  
approx. 18.0 t/h from 35% - 15%  
approx. 26.0 t/h from 25% - 15%

## Project: Ujscie Poland



**Type:** MDB-XN 1/18-SB

**Year:** 2015

**Product:** maize

**Drying capacity:**

approx. 20.4 t/h from 35% to 15%

## Project: Budyn Czech Republic



**Type:** MDB-XN 3/15-SB

+ cooler MDB-XN 4-2-8

**Year:** 2015

**Product:** maize

**Drying capacity:**

approx. 51.0 t/h from 35% to 15%



# drying technology

Project: Amattheon Agri Uganda Ltd.  
Uganda, Nwoya Town Council, Anaka

Project: Bucovice  
Czech Republic



**Type:** MDB-TN 1/10-S

**Year:** 2015

**Product:** maize

**Drying capacity:**

approx. 10.0 t/h from 24% to 14%



**Type:** MDB-XN 1/7-S

**Year:** 2015

**Product:** maize, wheat, rapeseed

**Drying capacity:**

maize: approx. 12.2 t/h from 25% to 15%

wheat: approx. 26.9 t/h from 19% to 15%

rapessed: approx. 21.5 t/h from 13% to 9%



Project: Dubenec  
Czech Republic



**Type:** GDB-TN 1/6-S

**Year:** 2015

**Product:** maize, wheat, rapeseed

**Drying capacity:**

maize: approx. 5.1 t/h from 35% to 15%

wheat: approx. 20.6 t/h from 19% to 15%

rapeseed: approx. 15.5 t/h from 13% to 9%

Project: Vrbicka  
Czech Republic



**Type:** GDB-TN 1/5-S

**Year:** 2015

**Product:** maize, wheat, rapeseed

**Drying capacity:**

maize: approx. 4.3 t/h from 35% to 15%

wheat: approx. 17.2 t/h from 19% to 15%

rapeseed: approx. 12.9 t/h from 13% to 9%



# drying technology

Project: LEVG Hankensbüttel-Gross  
Oesingen, Zw. D. VB OLD  
Germany, Wittingen



**Type:** GDB-XN 1/10-SU  
**Year:** 2015  
**Product:** maize, wheat

**Drying capacity:**

maize: approx. 11.0 t/h from 35% to 15%  
wheat: approx. 30.0 t/h from 19% to 15%

Project: Chotesov II  
Czech Republic



**Type:** GDB-TN 1/5-S  
**Year:** 2015  
**Product:** maize, wheat, rapeseed

**Drying capacity:**

maize: approx. 4.3 t/h from 35% to 15%  
wheat: approx. 17.2 t/h from 19% to 15%  
rapeseed: approx. 12.9 t/h from 13% to 9%



# drying technology

Project: Gut Heinrichsdorf,  
Germany, Witzhave



**Type:** GDB-TN 1/4-S

**Year:** 2015

**Product:** maize, wheat, rapeseed

**Drying capacity:**

maize: approx. 2.8 t/h from 35% to 15%

wheat: approx. 8.4-10.0 t/h from 19% to 15%

rapeseed: 6.5 t/h from 13% - 9%

Project: Osek Klokoci  
Czech Republic, Osek nad Bécvou



**Type:** MDB-XN 1/12-SB

**Year:** 2015

**Product:** maize, wheat, rapeseed

**Drying capacity:**

maize: approx. 14.4 t/h from 35% to 15%

wheat: approx. 46.2 t/h from 19% to 15%

rapeseed: 36.8 t/h from 13% - 9%





# drying technology

Project: Gerhard Kreitmair  
Germany, Dachau

**Type:** MDB-XN 1/12-SB

**Year:** 2015

**Product:** maize

**Drying capacity:** approx. 12.0 t/h from 35% to 15%





# drying technology

Project: Oseva Uni a.s.  
Czech Republic, Vysoké Myto

Project: Slatina  
Czech Republic



**Type:** GDB-XN 1/7-S  
**Year:** 2014  
**Product:** maize, wheat

**Drying capacity:**

maize: approx. 8.4 t/h from 35% to 15%  
wheat: approx. 33.7 t/h from 19% to 15%



**Type:** GDB-TN 1/4-S  
**Year:** 2014  
**Product:** maize, wheat, rapeseed

**Drying capacity:**

maize: approx. 3.4 t/h from 35% to 15%  
wheat: approx. 13.8 t/h from 19% to 15%  
rapeseed: approx. 10.3 t/h from 13% to 9%



# drying technology

Project: RWG Graftschaft Hoya  
Germany, Schweringen

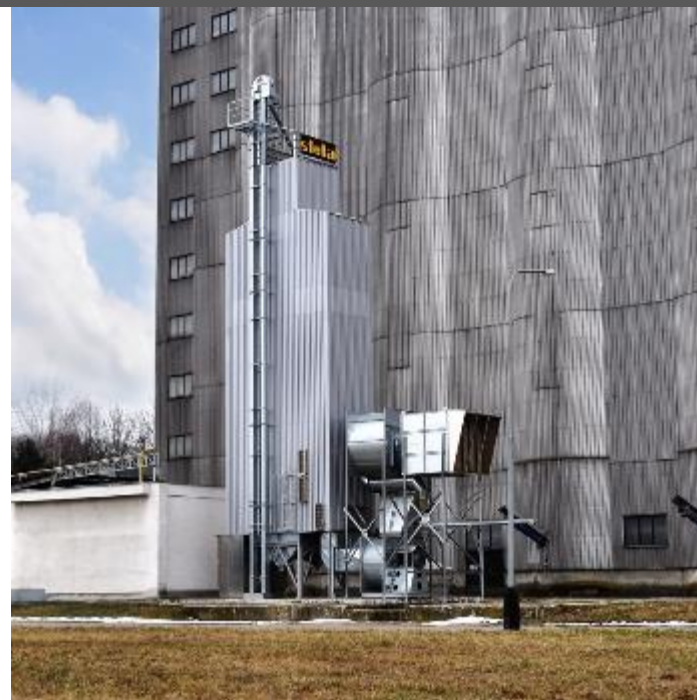


**Type:** MDB-XN 1/10-SU  
**Year:** 2014  
**Product:** maize, wheat, rapeseed

**Drying capacity:**

maize: approx. 10.0 t/h from 35% to 15%  
wheat: approx. 35.0 t/h from 19% to 15%  
rapeseed: approx. 27.0 t/h from 13% to 9%

Project: Agrofert, Primagra a.s.  
Czech Republic, Votice



**Type:** GDB-XN 1/11-S  
**Year:** 2014  
**Product:** maize, wheat

**Drying capacity:**

maize: approx. 13.0 t/h from 35% to 15%  
wheat: approx. 50.0 t/h from 19% to 15%





# drying technology

Project: Patent co. DOO Misicevo  
Serbia, Misicevo



**Type:** MDB-XN 1/10-SU  
**Year:** 2014  
**Product:** maize

**Drying capacity:**  
approx. 25.0 t/h from 20% to 15%

Project: APH e.G. Hinsdorf GbR  
Germany, Südliches Anhalt OT  
Quellendorf



**Type:** GD-TN 2275 – 1/10 (special construction)  
**Year:** 2014  
**Product:** maize, wheat

**Drying capacity:**  
maize: approx. 5.8 t/h from 35% to 14%  
wheat: approx. 20.0 t/h from 19% to 15%



# drying technology

Project: Pasz Konspol  
Poland, Nekla



**Type:** MDB-XN 1/16-SB

**Year:** 2014

**Product:** maize

**Drying capacity:**

approx. 18.0 t/h from 35% to 15%

Project: Gebi GmbH  
Serbia, Cantavir



**Type:** 2x MDB-XN 2/14-SU

**Year:** 2014

**Product:** maize

**Drying capacity:**

approx. a 40.0 t/h from 25% to 15%



# drying technology

Project: Agravis Raiffeisen AG  
Germany, Hage

Project: Lagerhaus Eichinger  
Germany, Tann



**Type:** MDB-XN 1/8-SU

**Year:** 2014

**Product:** maize, grain

**Drying capacity:**

maize: approx. 5.6 t/h from 35% to 15%

grain: approx. 20.0 t/h from 19% to 15%



**Type:** MDB-TN 1/17-SB

**Year:** 2014

**Product:** maize

**Drying capacity:**

approx. 10.0 t/h from 35% to 14%





# drying technology

Project: Panvita  
Slovenia, Beltinci



**Type:** MDB-XN 2/17-SB  
**Year:** 2014  
**Product:** maize

**Drying capacity:**  
maize: approx. 50.0 t/h from 25% to 14%

Project: Blazovice  
Czech Republic



**Type:** MDB-XN 1/6-S  
**Year:** 2013  
**Product:** maize

**Drying capacity:**  
maize: approx. 7.2 t/h from 35% to 15%



# drying technology

Project: JSC „Grodnenskij alcoholic  
beverage plant“  
Belarus, Grodno

**Type:** GDB-XN 1/10-S

**Year:** 2013

**Product:** wheat

**Drying capacity:** approx. 30.0 t/h from 21% - 15%







# drying technology

Project: Kombinat Rolny Kiertz  
Poland



**Type:** MDB-XN 2/17-SU

**Year:** 2013

**Product:** maize

**Drying capacity:**

maize: approx. 37.0 t/h from 35% to 15%

Project: Kremin  
Ukraine, Chernihiv region



**Type:** MDB-XN 1/10-SU

**Year:** 2013

**Product:** maize, wheat

**Drying capacity:**

wheat: approx. 38.5 t/h from 19% to 15%

maize: approx. 14.0 t/h from 30% to 15%



Project: Milin-Primagra  
Czech Republic



**Type:** GDB-XN 1/10-S  
**Year:** 2013  
**Product:** maize, wheat

**Drying capacity:**

maize: approx. 11.5 t/h from 35% to 15%  
wheat: approx. 38.0 t/h from 19% to 15%

Project: Radovesnice II  
Czech Republic



**Type:** MDB-XN 1/13-SU  
**Year:** 2013  
**Product:** maize

**Drying capacity:**

maize: approx. 22.6 t/h from 25% to 15%  
maize: approx. 15.6 t/h from 35% to 15%

Project: Lohnunternehmen Brielmaier  
Germany, Grucking



**Type:** MDB-TN 1/9

**Year:** 2013

**Product:** maize, wheat

**Drying capacity:**

wheat: approx. 23.0 t/h from 19% to 15%

maize: approx. 7.2 t/h from 35% to 15%

Project: Hagemann  
Germany, Groß Salitz



**Type:** MDB-TN 1/8-S

**Year:** 2013

**Product:** maize, wheat, rapeseed

**Drying capacity:**

wheat: approx. 20.0 t/h from 19% to 15%

maize: approx. 5.6 t/h from 35% to 15%

rapeseed: approx. 14.0 t/h from 13% to 9%



# drying technology

Project: Trocknungsgenossenschaft  
Reding eG Germany, Reding



**Type:** MDB-XN 2/16-SB

**Year:** 2013

**Product:** maize

**Drying capacity:**

approx. 32.0 t/h from 35% to 15%

Project: Feuerstein  
France, Durmenach



**Type:** MDB-XN 2/17-SB

**Year:** 2013

**Product:** maize

**Drying capacity:**

approx. 35.0 t/h from 35% to 15%





# drying technology

Project: Sara Farm  
Poland, Maszewo



**Type:** MDB-XN 1/10-SB

**Year:** 2013

**Product:** maize

**Drying capacity:**

approx. 14.7 t/h from 30% to 15%

Project: Herbert Eckl  
Germany, Neufahrn



**Type:** MDB-TN 1/7-SU

**Year:** 2013

**Product:** maize, wheat

**Drying capacity:**

wheat: approx. 15.0 t/h from 19% to 15%

maize: approx. 5.0 t/h from 35% to 15%

Project: Gebr. Röde Gbr  
Germany, Neschwitz



**Type:** MDB-TN 1/7-S mit Hackschnitzelbefeuerung

**Year:** 2013

**Product:** wheat, rapeseed, maize

**Drying capacity:**

wheat: approx. 15.0 t/h from 19 % to 15%  
rapeseed: approx. 12.0 t/h from 13% to 9%  
maize: approx. 3.7 t/h from 35% to 15%

Project: Bioenergie GmbH Sanne-  
Kerkuhn Germany, Arendsee



**Type:** MDB-TN 1/5-6-S

**Year:** 2013

**Product:** wheat, rapeseed, maize

**Drying capacity:**

wheat: approx. 12.5 t/h from 19 % to 15%  
rapeseed: approx. 8.0 t/h from 13% to 9%  
maize: approx. 3.5 t/h from 35% to 15%



# drying technology

Project: Agrodienst e. G.  
Germany, Jessen



**Type:** MDB-XN 1/7-SU  
**Year:** 2013  
**Product:** wheat, rapeseed, maize

**Drying capacity:**

wheat: approx. 24.5 t/h from 19% to 15%  
rapeseed: approx. 18.5 t/h from 13% to 9%  
maize: approx. 7.5 t/h from 35% to 15%

Project: Lagerhaus Obermeier  
Germany, Geiselhöring



**Type:** MDB-TN 1/7-SU  
**Year:** 2013  
**Product:** wheat, rapeseed, maize

**Drying capacity:**

wheat: approx. 18.5 t/h from 19% to 15%  
rapeseed: approx. 15.0 t/h from 13% to 9%  
maize: approx. 5.2 t/h from 35% to 15%





# drying technology

Project: Goran Škaper  
Slovenia, Puconci



**Type:** MDB-TN 1/12-SU  
**Year:** 2013  
**Product:** wheat, maize

**Drying capacity:**

wheat: approx. 26.0 t/h from 19% to 15%  
maize: approx. 15.0 t/h from 25% to 15%

Project: Jeruzalem Ormož SAT d.d.  
Slovenia, Ormož



**Type:** MDB-XN 1/11-SU  
**Year:** 2013  
**Product:** maize

**Drying capacity:**

approx. 10.0 t/h from 32% to 14%



# drying technology

Project: PVA Klimmer Gbr  
Germany, Obernburg am Main



**Type:** MDB-TN 1/5-S  
**Year:** 2013  
**Product:** wheat, rapeseed, maize

**Drying capacity:**

wheat: approx. 10.0 t/h from 19% to 15%  
rapeseed: approx. 8.0 t/h from 13% to 9%  
maize: approx. 2.5 t/h from 35 % to 15%

Project: Agrosaat d.o.o.  
Slovenia, Škofljica



**Type:** MDB-TN 1/6-S  
**Year:** 2012  
**Product:** maize

**Drying capacity:**

approx. 7.5 t/h from 25% to 15%



# drying technology

Project: Melnik  
Czech Republic



**Type:** MDB-XN 1/7-SU  
**Year:** 2012  
**Product:** maize, wheat, rapeseed

**Drying capacity:**

wheat: approx. 26.9 t/h from 19% to 15%  
maize: approx. 12.2 t/h from 25% to 15%  
rapeseed: approx. 21.5 t/h from 13% to 9%

Project: Hubert Möller Landhandel  
Germany, Bad Laer



**Type:** MUB-XN 1/10-S+6  
**Year:** 2012  
**Product:** maize

**Drying capacity:**

maize: approx. 2 Charge/24h from 35% to 15%



Project: Kolin  
Czech Republic



**Type:** MDB-XN 1/13-SU

**Year:** 2012

**Product:** maize, wheat

**Drying capacity:**

wheat: approx. 46.8 t/h from 19% to 15%

maize: approx. 22.6 t/h from 25% to 15%

Project: Vyskov  
Czech Republic



**Type:** MDB-XN 1/7-S

**Year:** 2012

**Product:** maize, wheat, rapeseed

**Drying capacity:**

wheat: approx. 26.9 t/h from 19% to 15%

maize: approx. 12.2 t/h from 25% to 15%

rapeseed: approx. 21.5 t/h from 13% to 9%



# drying technology

Project: Dobrovice  
Czech Republic



**Type:** GDB-XN 1/7-S  
**Year:** 2012  
**Product:** wheat, rapeseed, maize

**Drying capacity:**

wheat: approx. 33.7 t/h from 19% to 15%  
rapeseed: approx. 25.3 t/h from 13% bis 9%  
maize: approx. 12.2 t/h from 25% to 15%

Project: Wallner Ökomarkt  
Germany, Hebertshausen



**Type:** MDB-TN 1/6-S  
**Year:** 2012  
**Product:** maize, wheat

**Drying capacity:**

wheat: approx. 15.0 t/h from 19% to 15%  
maize: approx. 4.7 t/h from 35% to 15%



# drying technology

Project: Weiterer Landhandel  
Germany, Algermissen



**Type:** MDB-XN 1/8-SU  
**Year:** 2012  
**Product:** maize, rapeseed, wheat

**Drying capacity:**

maize: approx. 8.0 t/h from 35% to 15%  
rapeseed: approx. 19.0 t/h from 13% to 9%  
wheat: approx. 24.0 t/h from 19% to 15%

Project: HaGe Nordland  
Germany, Groß Kiesow



**Type:** GDB-XN 1/10-S  
**Year:** 2012  
**Product:** wheat

**Drying capacity:**

approx. 35.0 t/h from 19% to 15%





# drying technology

Project: LBAG Pretzier eG  
Germany, Salzwedel



**Type:** MDB-XN 1/6-S  
**Year:** 2012  
**Product:** wheat, rapeseed, maize

**Drying capacity:**

wheat: approx. 21.0 t/h from 19% to 15%  
rapeseed: approx. 16.0 t/h from 13% to 9%  
maize approx. 6.5 t/h from 35% to 15%

Project: Jirice  
Czech Republic



**Type:** MDB-XN 1/13-SU  
**Year:** 2012  
**Product:** maize

**Drying capacity:**

approx. 15.6 t/h from 35% to 15%



# drying technology

Project: Bayernhof GmbH  
Germany, Straubing



**Type:** MDB-XN 1/11-SU+Z  
**Year:** 2012  
**Product:** maize, wheat, rapeseed

**Drying capacity:**

maize: approx. 12.0 t/h from 35% to 15%  
wheat: approx. 36.0 t/h from 19% to 15%  
rapeseed: approx. 22.0 t/h from 13% to 9%

Project: Agrodim  
Ukraine, Bahmach



**Type:** MDB-XN 3/15-SU  
**Year:** 2012  
**Product:** maize

**Drying capacity:**

approx. 51.0 t/h from 35% to 15%



# drying technology

Project: Gavrilovic Poljoprivreda d.o.o.  
Slovenia, Ljubljana

Project: Viru Agro OÜ  
Estonia



**Type:** MDB-XN 2/12-SU  
**Year:** 2011  
**Product:** maize

**Drying capacity:**  
approx. 20.0 t/h from 32% to 14%



**Type:** GDB-XN 1/7-S  
**Year:** 2012  
**Product:** maize, wheat, rapeseed

**Drying capacity:**  
maize: approx. 12.2 t/h from 25% to 15%  
maize: approx. 8.4 t/h from 35% to 15%  
wheat: approx. 33.7 t/h from 19% to 15%  
rapeseed: approx. 25.3 t/h from 13% to 9%





# drying technology

Project: Duna Horizont  
Hungary, Gattimajor



**Type:** MDB-XN 2/13-SU  
**Year:** 2011  
**Product:** maize

**Drying capacity:**  
approx. 41.0 t/h from 21% to 14%

Project: Agroradicevic  
Slovenia



**Type:** MDB-XN 2/9-SU  
**Year:** 2011  
**Product:** maize

**Drying capacity:**  
approx. 30.0 t/h from 24% to 14%



# drying technology

Project: Hevizgyörk  
Hungary



**Type:** MDB-TN 1/8-SU  
**Year:** 2011  
**Product:** maize

**Drying capacity:**  
approx. 10.0 t/h from 25% to 15%

Project: Nagykata  
Hungary, Nagykata



**Type:** MDB-TN 1/8-SU  
**Year:** 2011  
**Product:** maize

**Drying capacity:**  
approx. 10.0 t/h from 25% to 15%



# drying technology

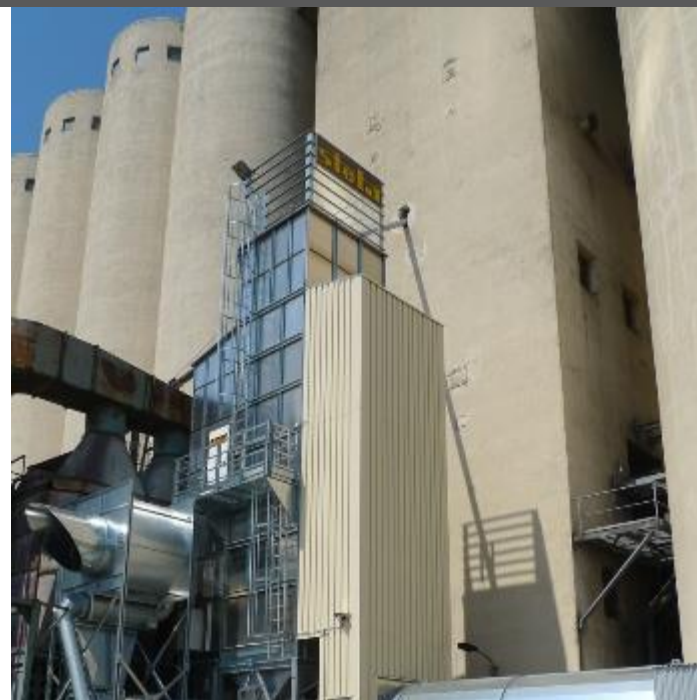
Project: Agrofert Sedlcany  
Czech Republic



**Type:** GDB-XN 1/10-S  
**Year:** 2011  
**Product:** rapeseed

**Drying capacity:**  
approx. 27.5 t/h from 12% to 8%

Project: Agrofert Polepy  
Czech Republic



**Type:** MDB-XN 1/7-S  
**Year:** 2011  
**Product:** wheat, maize, rapeseed

**Drying capacity:**  
wheat: approx. 24.5 t/h from 18% to 14%  
maize: approx. 10.0 t/h from 30% to 14%  
rapeseed: approx. 20.0 t/h from 12% to 8%





# drying technology

Project: Volksbank & Raiffeisenbank  
Germany, Fridolfing



**Type:** MDB-TN 1/7-S

**Year:** 2010

**Product:** maize

**Drying capacity:**

approx. 5.7 t/h from 35% to 15%

Project: Hosteradice  
Czech Republic



**Type:** MDB-XN 2/17 – SU + cooling unit

**Year:** 2010

**Product:** maize, rapeseed

**Drying capacity:**

maize: approx. 48.0 t/h from 30% to 15%

rapeseed: approx. 101.0 t/h from 13% to 9%



# drying technology

Project: Commoditier Euromar  
Germany, Fehrbellin



**Type:** GDB-TN 1/5-S

**Year:** 2010

**Product:** cocoa beans

**Drying capacity:**

approx. 5.0 t/h from 15% to 2%

Project: Ostrov  
Czech Republic



**Type:** GDB-XN 1/6-S

**Year:** 2009

**Product:** maize, wheat

**Drying capacity:**

wheat: approx. 28.9 t/h from 19% to 15%

maize: approx. 7.2 t/h from 35% to 15%



# drying technology

Project: Raiffeisenbank Hofkirchen-  
Bayerbach e. G. Germany,  
Laberweinting



**Type:** MDB-TN 1/7-S

**Year:** 2009

**Product:** maize

**Drying capacity:**

approx. 5.5 t/h from 35 % to 15 %

Project: Kralovice  
Czech Republic



**Type:** GDB-TN 1/5-S

**Year:** 2009

**Product:** wheat, rapeseed

**Drying capacity:**

wheat: approx. 16.5 t/h from 19% to 15%

rapeseed: approx. 12.5 t/h from 13% to 9%



## Project: Blatnice Czech Republic



**Type:** MDB-XN 1/6-S  
**Year:** 2009  
**Product:** maize, wheat

**Drying capacity:**

maize: approx. 10.5 t/h from 25% to 15%  
wheat: approx. 23.1 t/h from 19% to 15%

## Project: Munice Czech Republic



**Type:** MDB-TN 1/4-S  
**Year:** 2009  
**Product:** maize

**Drying capacity:**

approx. 3.4 t/h from 35% to 15%



# drying technology

Project: Morasice  
Czech Republic



**Type:** GDB-TN 1/6-S  
**Year:** 2009  
**Product:** wheat, rapeseed

**Drying capacity:**  
wheat: approx. 17.2 t/h from 19% to 15%  
rapeseed: approx. 12.9 t/h from 13% to 9%

Project: Hostoun  
Czech Republic



**Type:** GDB-TN 1/4-S  
**Year:** 2009  
**Product:** maize

**Drying capacity:**  
approx. 13.8 t/h from 19% to 15%



# drying technology

Project: Raiffeisen-Bawinkel  
Germany, Bawinkel



**Type:** MDB-XN 1/10-SU  
**Year:** 2008  
**Product:** maize, wheat

**Drying capacity:**

maize: approx. 12.0 t/h from 35% to 15%  
wheat: approx. 38.5 t/h from 19% to 15%

Project: Magtárház  
Hungary



**Type:** MDB-XN 2/13-SU  
**Year:** 2008  
**Product:** maize

**Drying capacity:**

approx. 35.0 t/h from 25% to 13%





# drying technology

Project: Szabadbattyán  
Hungary



**Type:** MDB-XN 2/10-SU  
**Year:** 2008  
**Product:** maize, wheat

**Drying capacity:**

maize: approx. 21.6 t/h from 35% to 15%  
wheat: approx. 69.3 t/h from 19% to 15%

Project: Dolní Újezd  
Czech Republic



**Type:** GDB-XN 1/6-S  
**Year:** 2008  
**Product:** maize, wheat

**Drying capacity:**

wheat: approx. 23.0 t/h from 19% to 15%  
maize: approx. 7.0 t/h from 35% to 15%



# drying technology

Project: Bozice  
Czech Republic



**Type:** MDB-XN 2/6-S  
**Year:** 2008  
**Product:** maize

**Drying capacity:**  
approx. 14.4 t/h from 35% to 15%

Project: Adony  
Hungary



**Type:** MDB-XN 1/12-SU  
**Year:** 2008  
**Product:** maize, wheat

**Drying capacity:**  
maize: approx. 14.4 t/h from 35% to 15%  
maize: approx. 20.9 t/h from 25% to 15%  
wheat: approx. 46.2 t/h from 19% to 15%

Project: Raiffeisen Heidesand eG  
Germany, Scheßel



**Type:** MDB-TN 1/7-SU

**Year:** 2008

**Product:** maize, wheat

**Drying capacity:**

maize: approx. 5.7 t/h from 35% to 15%

wheat: approx. 19.0 t/h from 19% to 15%

Project: Trest  
Czech Republic



**Type:** GDB-TN 1/6-S

**Year:** 2007

**Product:** maize, wheat, rapeseed

**Drying capacity:**

wheat: approx. 20.6 t/h from 19% to 15%

rapeseed: approx. 15.5 t/h from 13% to 9%

maize: approx. 5.1 t/h from 35% to 15%

maize: approx. 7.5 t/h from 25% to 15%





# drying technology

Project: Sardice  
Czech Republic



**Type:** MDB-TN 1/ 8  
**Year:** 2007  
**Product:** maize, wheat

**Drying capacity:**

maize: approx. 6.9 t/h from 35% to 15%  
maize: approx. 10.0 t/h from 25% to 15%  
wheat: approx. 22.0 t/h from 19% to 15%

Project: Senice  
Czech Republic



**Type:** MDB-TN 1/8-SU  
**Year:** 2007  
**Product:** maize, wheat

**Drying capacity:**

maize: approx. 6.9 t/h from 35% to 15%  
maize: approx. 10.0 t/h from 25% to 15%  
wheat: approx. 22.0 t/h from 19% to 15%



# drying technology

Project: BayWa  
Germany, Freiberg



**Type:** MDB-XN 1/11

**Year:** 2007

**Product:** maize, wheat

**Drying capacity:**

maize: approx. 12.0 t/h from 35% to 15%

wheat: approx. 40.0 t/h from 19% to 15%

Project: Sedletin  
Czech Republic



**Type:** GDB-TN 1/5-S

**Year:** 2007

**Product:** maize, rapeseed, wheat

**Drying capacity:**

maize: approx. 7.0 t/h from 25% to 15%

rapeseed: approx. 12.9 t/h from 13% to 9%

wheat: approx. 17.2 t/h from 19% to 15%



# drying technology

Project: WMW  
Serbia and Montenegro, Melenci



**Type:** MDB-XN 1/15-SU  
**Year:** 2006  
**Product:** maize

**Drying capacity:**  
approx. 20.0 t/h from 32% to 14%

Project: Jevisovice  
Czech Republic



**Type:** MDB-XN 1/13-SU  
**Year:** 2006  
**Product:** maize

**Drying capacity:**  
approx. 15.6 t/h from 35% to 15%





# drying technology

Project: Kutna Hora  
Czech Republic



**Type:** MDB-XN 1/13-SU  
**Year:** 2006  
**Product:** maize, wheat, rapeseed

**Drying capacity:**

maize: approx. 15.6 t/h from 35% to 15%  
wheat: approx. 50.0 t/h from 19% to 15%  
rapeseed: approx. 39.8 t/h from 13% to 9%

Project: Palhalma  
Hungary



**Type:** MDB-XN 2/10-SU  
**Year:** 2006  
**Product:** maize, wheat

**Drying capacity:**

maize: approx. 21.0 t/h from 35% to 15%  
maize: approx. 31.4 t/h from 25% to 15%  
wheat: approx. 35.0 t/h from 19% to 15%



# drying technology

Project: Hosteradice  
Czech Republic



**Type:** MDB-TN 1/15  
**Year:** 2006  
**Product:** maize

Project: Trockenwerk Eldena  
Germany, Eldena



**Type:** GDB-TN 1/6  
**Year:** 2006  
**Product:** maize, wheat

**Drying capacity:**  
wheat: approx. 20.0 t/h from 19% to 15%  
maize: approx. 5.0 t/h from 35% to 15%



# drying technology

Project: Mestec Kralove  
Czech Republic



**Type:** MDB-XN 1/13-SU  
**Year:** 2006  
**Product:** maize, wheat

**Drying capacity:**

maize: approx. 16.0 t/h from 35% to 15%  
wheat: approx. 50.0 t/h from 35% to 15%

Project: Agribalt  
Estonia, Muuga PM



**Type:** GDB-TN 1/6 S  
**Year:** 2006  
**Product:** grain, rapeseed

**Drying capacity:**

grain: approx. 20.0 t/h from 19% to 15%  
rapeseed: approx. 15.0 t/h from 13% to 9%





# drying technology

Project: Raiffeisen-Buchbach  
Germany, Buchbach



**Type:** MDB-TN 1/6

**Year:** 2005

**Product:** maize

**Drying capacity:**

maize: approx. 5.0 t/h from 35% to 15%

Project: TG Reding  
Germany, Reding



**Type:** MDB-TN 4/16

**Year:** 2005

**Product:** maize

**Drying capacity:**

approx. 50.0 t/h from 33% to 15%



# drying technology

Project: Gebi  
Serbia und Montenegro, Cantavir



**Type:** MDB-TN 1/12-SU  
**Year:** 2005  
**Product:** maize, wheat

**Drying capacity:**

maize: approx. 15.0 t/h from 25% to 14%  
wheat: approx. 33.0 t/h from 19% to 15%

Project: Complex-Agromars  
Ukraine, Kiev



**Type:** MDB-XN 2/10-SU  
**Year:** 2005  
**Product:** maize

**Drying capacity:**

approx. 22.0 t/h from 35% to 15%

## Project: Chotysany Czech Republic



**Type:** GDB-TN 1/9-S

**Year:** 2005

**Product:** maize, wheat

**Drying capacity:**

wheat: approx. 31.0 t/h from 19% to 15%

maize: approx. 7.7 t/h from 35% to 15%

maize: approx. 11.2 t/h from 25% to 15%

## Project: Rostenice Czech Republic



**Type:** MDB-XN 1/12-SU

**Year:** 2005

**Product:** maize, wheat

**Drying capacity:**

maize: approx. 14.4 t/h from 35% to 15%

maize: approx. 20.9 t/h from 25% to 15%

wheat: approx. 46.2 t/h from 19% to 15%





# drying technology

Project: Zito  
Croatia, Osijek



**Type:** MDB-XN 2/12-SU  
**Year:** 2004, 2003, 2002  
**Product:** maize, sunflower-seeds

**Drying capacity:**

maize: approx. 30.0 t/h from 32% to 14%  
maize: approx. 43.0 t/h from 25% to 15%  
sunflower-seeds: approx. 20.0 t/h from 13% to 9%

Project: Böhm  
Austria, Pinkafeld



**Type:** MDB-TN 1/6  
**Year:** 2004  
**Product:** maize

**Drying capacity:**

approx. 11.0 t/h from 25% to 15%



# drying technology

Project: RWG Ems-Hümmling  
Germany, Ems-Hümmling



**Type:** MDB-XN 1/5  
**Year:** 2004  
**Product:** maize

**Drying capacity:**  
approx. 5.0 t/h from 35% to 15%

Project: Raiffeisen  
Germany, Aschberg



**Type:** MDB-XN 1/8  
**Year:** 2004  
**Product:** maize

**Drying capacity:**  
approx. 8.0 t/h from 35% to 15%



# drying technology

Project: Damatex  
Slovakia, Andovce



**Type:** MDB-XN 1/8-SU  
**Year:** 2004  
**Product:** wheat, maize

**Drying capacity:**

wheat: approx. 15.0 t/h from 19% to 15%  
maize: approx. 10.0 t/h from 35% to 15%

Project: Porici  
Czech Republic



**Type:** MDB-TN 2/6-S  
**Year:** 2004  
**Product:** maize

**Drying capacity:**

approx. 10.0 t/h from 35% to 15%





# drying technology

Project: Karl Lorber  
Austria, St. Veit a. Vogau

Project: ARI  
Turkey, Balikesir



**Type:** MDB-XN 1/10  
**Year:** 2004  
**Product:** maize

**Drying capacity:**  
approx. 10.5 t/h from 35% to 15%



**Type:** MDB-XN 2/9-R  
**Year:** 2004  
**Product:** soya bean

**Drying capacity:**  
approx. 15.0 t/h from 14% to 9%



# drying technology

Project: Ostredk  
Czech Republic



**Type:** MDB-TN 1/4-S  
**Year:** 2004  
**Product:** maize, wheat

**Drying capacity:**  
maize: approx. 4.7 t/h from 25% to 15%  
wheat: approx. 10.4 t/h from 19% to 15%

Project: Harting GmbH  
Germany, Visbek



**Type:** MDB-TN 1/8  
**Year:** 2003  
**Product:** maize

**Drying capacity:**  
approx. 13.0 t/h from 35% to 15%



# drying technology

Project: Hofbauer  
Germany, Falkenberg



**Type:** MDB-TN 1/7

**Year:** 2003

**Product:** maize

**Drying capacity:**

approx. 5.0 t/h from 35% to 15%

Project: Teudoburger Ölmühle  
Germany, Ibbenbüren



**Type:** MDB-TN 1/8

**Year:** 2003

**Product:** maize

**Drying capacity:**

approx. 6.0 t/h from 35% to 15%





# drying technology

Project: Raiffeisen Biene-Twist  
Germany, Geeste



**Type:** MDB-TN 2/11

**Year:** 2003

**Product:** maize

**Drying capacity:**

approx. 15,0 t/h from 35% to 15%

Project: Shilan  
Iran, Gombad



**Type:** MDB-TN 1/4

**Year:** 2003

**Product:** maize

**Drying capacity:**

approx. 5,0 t/h from 18% to 12%



# drying technology

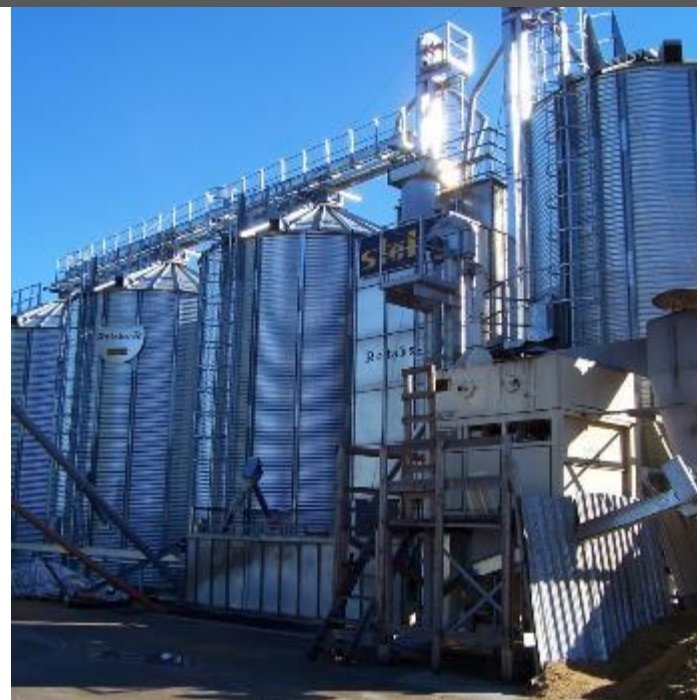
Project: Firma Paul Groth  
Germany, Sierhagen



**Type:** GDB T-2/12  
**Year:** 2003  
**Product:** wheat

**Drying capacity:**  
approx. 35.0 t/h from 19% to 15%

Project: Rotaks-R  
Estonia, Lääne-Virumaa



**Type:** GDB-TN 1/4-S  
**Year:** 2003  
**Product:** wheat

**Drying capacity:**  
approx. 13.0 t/h from 19% to 15%



# drying technology

Project: Proagros, Levice  
Slovakia



**Type:** MDB-TN 1/8-SU  
**Year:** 2002  
**Product:** maize

**Drying capacity:**  
approx. 9.5 t/h from 25% to 15%  
approx. 6.5 t/h from 35% to 15%

Project: Tamasi Fornad  
Hungary



**Type:** MDB-TN 1/15-SU  
**Year:** 2002  
**Product:** maize

**Drying capacity:**  
approx. 12.3 t/h from 35% to 15%  
approx. 17.9 t/h from 25% to 15%





# drying technology

Project: Agro Matuskova  
Slovakia



**Type:** MDB-TN 1/7-S  
**Year:** 2000  
**Product:** maize

**Drying capacity:**  
approx. 5.8 t/h from 35% to 15%  
approx. 8.5 t/h from 25% to 15%

Project: Imel  
Slovakia



**Type:** MDB-TN 2/10-S  
**Year:** 2000  
**Product:** maize

**Drying capacity:**  
approx. 16.0 t/h from 35% to 15%  
approx. 23.0 t/h from 25% to 15%